



sapiences2p

---

# SAP Ariba Consulting

---

Delivering high-quality, digital  
procurement and ERP solutions



sapiences2p

---

# SAP Ariba API Integration

Custom API Integration for Reporting, Chatbots, and More

---



# About Us

We give our clients a boutique experience on an enterprise scale

- Lovkesh Kapur founded SapienceS2P in 2018 to bring our procurement software configuration skills to the world.
- Using our onshore/offshore model to offer clients the world over access to highly-skilled professionals no matter where they are based.
- Our model gives clients access to top software talent during both the configuration and support phases of their software deployment.
- Previously we've worked with a range of big-name clients, including tier-1 technology and oil & gas companies.
- SapienceS2P makes it possible for every company to enjoy the latest in procurement and supply chain management software.





# API – Application Programming Interface

APIs are software intermediaries that enable different applications to communicate with one another, regardless of architecture or vendor.



## Web APIs

*Web APIs enable programs and services to communicate over the internet*

These APIs are represented by one or more publicly exposed endpoints, allowing external apps and services to communicate with the program in question.



## Common API Protocols

*The two most common protocols used are Simple Object Access Protocol (SOAP) and Representational State Transfer (REST)*

Using HTTP for simplicity, REST uses the GET, PUT, POST and DELETE command structure for speed and simplicity. Common data formats include JSON and XML.



## How APIs Help You

*APIs can be used to extend the capabilities of software and services beyond its usual boundaries*

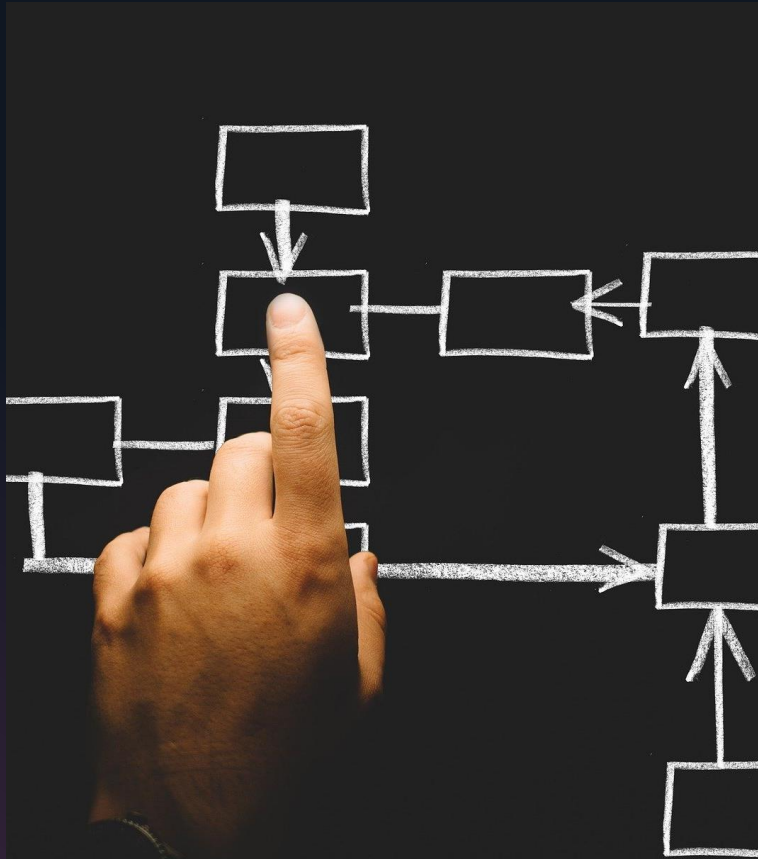
This is especially useful when you have systems that might have to deal with 3<sup>rd</sup>-party systems, or that might need to pass information to or from a custom interface such as a chatbot, reporting tool, or similar.



# SAP Ariba APIs

APIs are used as a secure, scalable way to facilitate communication between different Ariba processes

- Between cloud solutions and customer systems
- Between cloud solutions and partner applications
- APIs can be customized to offer intelligent integration methods between different processes and systems
- They can be used to facilitate communication, pass data, support logging and alert functions, and more
- The flexibility that APIs enable let you deploy on the cloud platform of your choice, and scale with other enterprise cloud self-service models



# SAP Ariba API Overview

An outline of the different types of APIs that can be used to interact with SAP Ariba

## Ariba Network APIs Management APIs

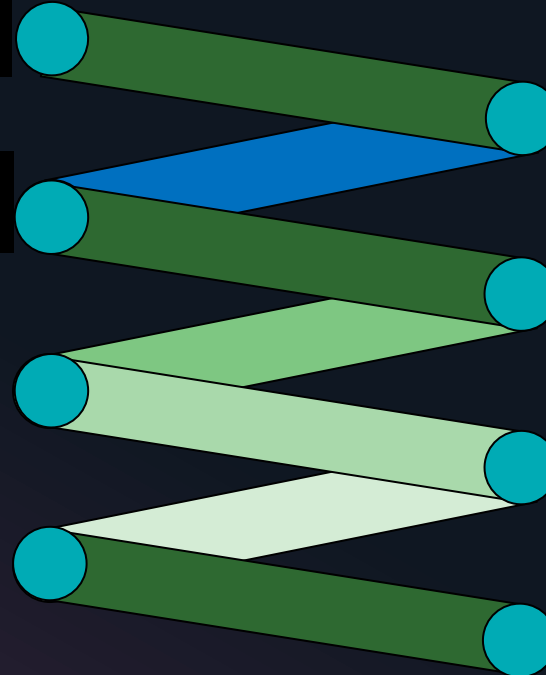
- **Publish** RFx events from a marketplace on SAP Ariba Discovery
- Publish SAP Ariba Discovery events to Web sites / marketplaces to increase number of bidders
- **Monitor** supply chain collaboration transactions across Ariba Network
- High visibility and traceability
- **Enrich processes and documents** (including PO, invoice, ASN, OC, and receipts in Ariba Network with information external to SAP Ariba)

**Discovery RFx from External Marketplace API**

**Discovery RFx to External Marketplace API**

**Transaction Monitoring API**

**Flow Extension API**



## Sourcing and Supplier

**Operational Reporting API for Sourcing**

- Retrieve transactional sourcing data for operational decisions for documents such as User, Organization, Sourcing Project, RFXItemValue, RFX Document, AuditEntry etc.

**Integration Monitoring API for Sourcing**

- Retrieve status of import and export file channel integration events for transaction and master data in SAP Ariba Sourcing solution.

**External Approval API for Sourcing and Supplier Management**

- Create and use an external application to obtain approval, denial, and comments on Sourcing and Supplier Management approvables.

**Supplier Data API with Pagination**

- Access supplier data on a read-only basis for integration to a 3rd-party tool
- Example: get a list of all suppliers with registered/qualified/preferred status for a category, region, and BU
- Only available for suppliers in SLP and SIPM

## Procurement APIs

- Create and use an external application to obtain approval, denial, and comments on PR and invoices generated in an SAP Ariba Procurement solution
- Systematically or by presenting the approval task to one or more approvers

### Document Approval API

- Enables your application to get custom forms document information from SAP Ariba Procurement solution for reporting or sending to an external ERP system.

### Custom Forms API

- Retrieve header, line item, and other details for procurement transactions (such as PR, PO, INV, IR and Receipts)

### Operational Reporting API for Procurement

- Retrieve status of import and export file channel integration events for transaction and master data in SAP Ariba Procurement solution.

### Integration Monitoring API for Procurement

### Catalog API

- Enables export of catalog data like catalog subscriptions, filtered subset of items and attribute-based faceted data.

### Analytical Reporting API

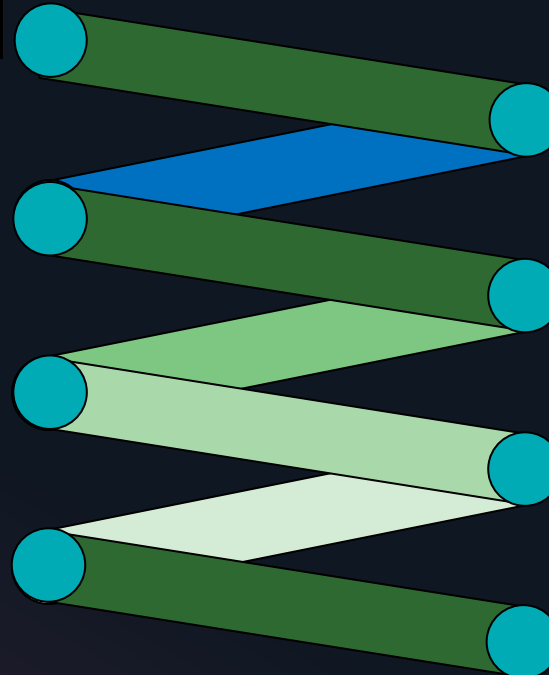
- Enables you to report on analytical data that helps identify trends and insights based on analysis of current and historic data.
- Access to all facts and dimensions data,

### Tax API

- Use third-party tax data providers to obtain tax calculations for PO and invoices in the SAP Ariba Buying, SAP Ariba Buying and Invoicing, and SAP Ariba Invoice Management solutions

### Validate and Enrich API

- Allows export of Requisition, Contract Request and Invoice data from the SAP Ariba Procurement solution to an external system for processing. You can validate and enrich data in header, line, and accounting fields.



# Advantages of Custom Ariba API Integration

You can gain a lot of functionality with custom APIs

## Extensive Developer Resources



The SAP Ariba Developer Portal has a wealth of knowledge and samples for you to build on, making it easy to create the right solution for you, with easy Discovery of a range of RESTful APIs.

## Direct Access to Data Resources



The Ariba API hooks give you and your systems quick and easy direct access to a number of different data publishing and system status update options.

## Easily Link Ariba to Systems New and Old



With extensive developer assets and easy-to-use customization and testing suites, the process of linking SAP Ariba with systems and processes using the Ariba API library is easy for skilled developers to achieve.

## Worldwide Ariba Development Community



When you join the SAP Ariba Developer Community, you get access to a wealth of knowledge and support from experienced developers from around the world.



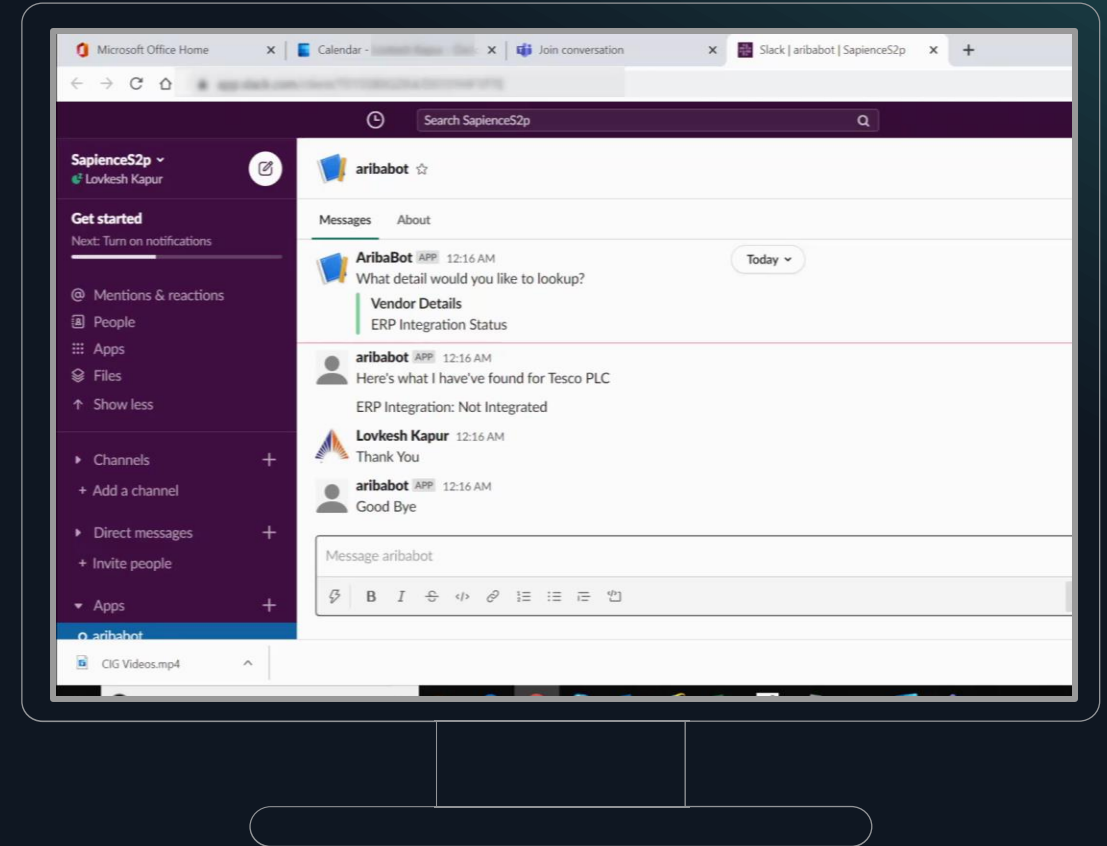


sapiences2p

# PRODUCT: SAP Ariba Chatbot

A prime example of how APIs can help extend and enhance the Ariba Cloud platform is with a chatbot interface – something with a number of useful benefits

- Drastically reduced employee training needs
- Faster navigation of different aspects of the Ariba platform
- Unified interface for all types of users
- Natural language processing and easily extended abilities make it suitable for a range of users on all types of device



## SOLUTION: SAP Ariba Chatbot

- Our chatbot is at the Proof of Concept (POC) stage, and uses Ariba APIs to give users access to the services they need using NLP and voice recognition
- Users are able to ask questions, which natural language processing will decipher and send to the system
- It can be used to make and handle orders, request reports and other data, and many other tasks that usually need a mouse and keyboard to complete
- This opens up the Ariba Network to users who are habitually away from their PC, new users, and users that are in too much of a hurry to use a more traditional interface



# How SapienceS2P Can Help You With the SAP Ariba APIs

Whether you're looking to add a chatbot to your procurement user interface or want to fully integrate a 3<sup>rd</sup> party or legacy solution, we can help

1

## Connect Different Applications and Services to Ariba

Ariba APIs cover a vast range of options for connecting different applications and services, offering easily accessed points for moving data in and out of the Ariba environment.

2

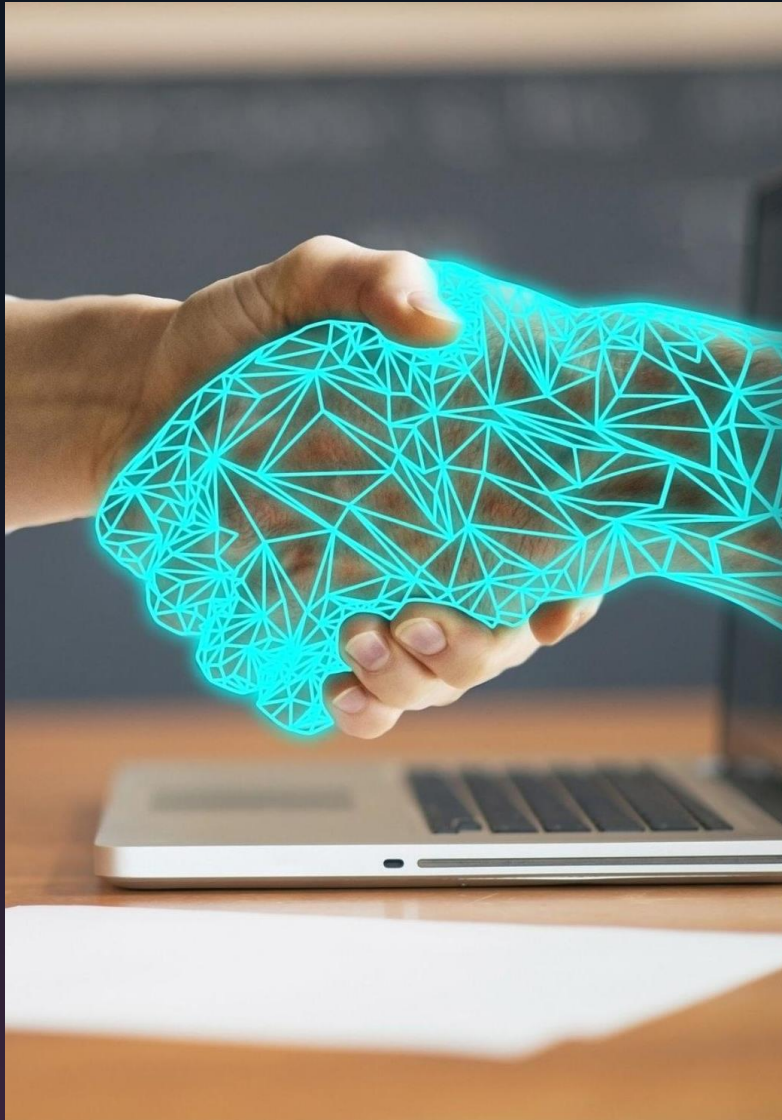
## Reduce Staff Training Needs and Operational Changes

By letting you attach both existing systems and new, easy-to-learn interfaces like chatbots, you can reduce the need for drastic operational changes when you deploy the latest Ariba solutions.

3

## APIs Make Software Maintenance and Upgrade Woes a Thing of the Past

Using APIs to connect to SAP Ariba Cloud means that while you are able to integrate your systems with Ariba however you want, SAP remains responsible for updates and software security within the cloud.



# Sapiences2P is Here to Help You Get the Most out of SAP Ariba

Get on touch today and find out more about how we can work together with you to build the best version of Ariba for your company

- Custom API integrations for new and existing systems
- Chatbot interfaces for improved productivity and reduced training costs
- Change management to help your organisation achieve a smooth transition to the latest SAP cloud procurement solutions
- Onsite and remote deployment, training, and technical support
- Years of experience with Tier-1 businesses around the world





sapiences2p

---

# THANK YOU!

---

Emily Gray-Fow - SAP Ariba  
Communications Director

**+44 (0) 2080780822**

*Email:*

**[egrayfow@sapiences2p.com](mailto:egrayfow@sapiences2p.com)**

*Website:*

**<https://www.sapiences2p.com>**